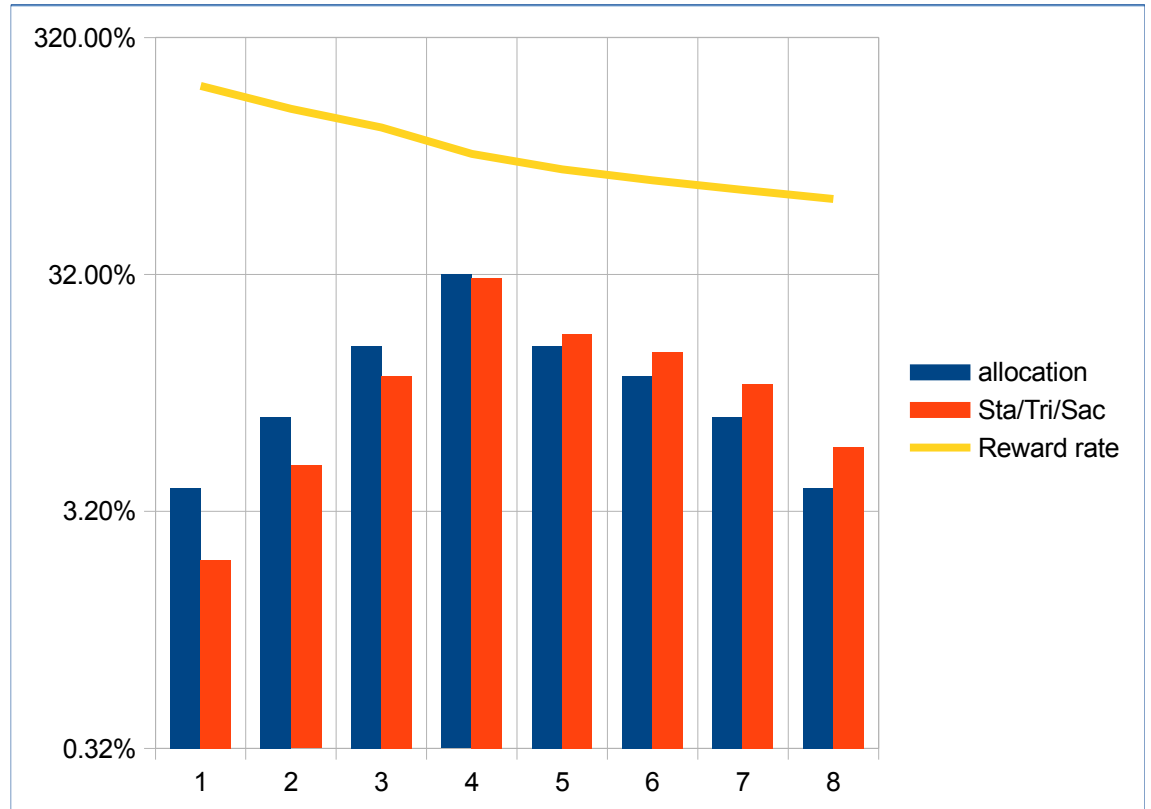


Proof of Stake, Tribute, Sacrifice & Second chance

Tiered Delayed rewards for securing the Network Nodes.
 Tribute stake (converted) to rewards pool for recirculation.
 Sacrifice (burn) stake to increase stake scarcity.
 Second chance lottery to incentivise more sacrifice.



	reward allocation	% of Sta/Tri/Sac	percentile from	to	Reward rate
1	4.00%	2.00%	1.00%	2.00%	200.00%
2	8.00%	5.00%	3.00%	7.00%	160.00%
3	16.00%	12.00%	8.00%	19.00%	133.33%
4	32.00%	31.00%	20.00%	50.00%	103.23%
5	16.00%	18.00%	51.00%	68.00%	88.89%
6	12.00%	15.00%	69.00%	83.00%	80.00%
7	8.00%	11.00%	84.00%	94.00%	72.73%
8	4.00%	6.00%	95.00%	100.00%	66.67%
sum	100.00%	100.00%			



allocation	rewards	proof of
80.00%	to	Stake
16.00%	to	Tribute
3.20%	to	Sacrifice
0.80%	to	2nd chance Sacrifice - winner takes all.

Delay of reward pool distributions.

Epoch 7 days & renews Sunday 00:00 Zion time.
 Stake within first 6 days of 7 day Epoch.
 Reward distributions last 2 days of following Epoch.

Node Stake Tier	reward allocation	min stake in thousands	to	max stake in thousands	example number	stake cap in millions	Tier millions
Villages	25.00%	\$10.00	to	\$50.00	2,000	\$0.05	\$100
City/region	25.00%	\$40.00	to	\$200.00	500	\$0.20	\$100
National	25.00%	\$200.00	to	\$1,000.00	100	\$1.00	\$100
Global	25.00%	\$1,000.00	to	\$5,000.00	20	\$5.00	\$100